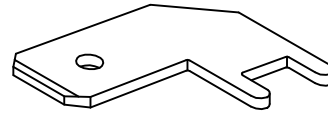
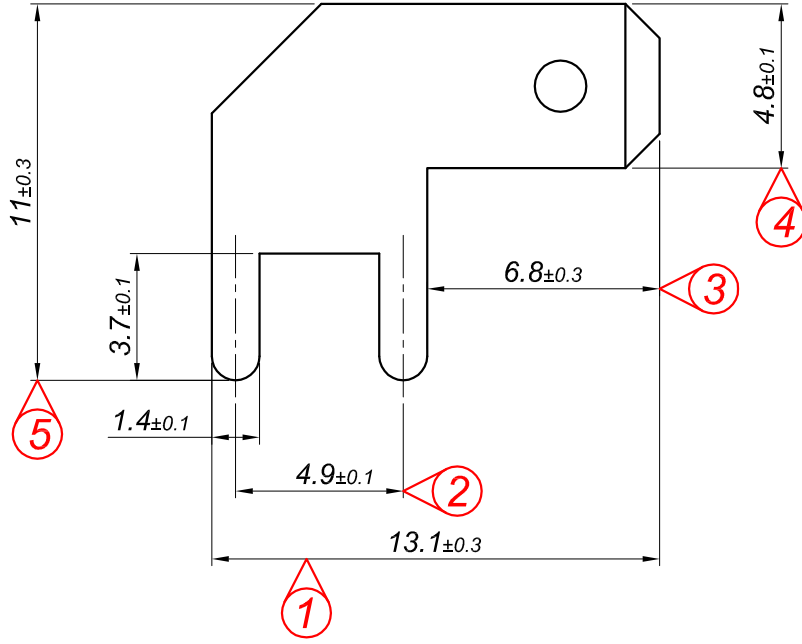
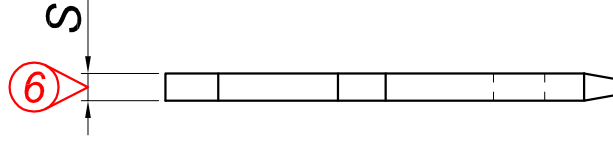



PARÇA KODU PART CODE	PARÇA ADI PART NAME	s ÖLÇÜSÜ (KALINLIK) s MEASURE (THICKNESS)	Malzeme Material	Kaplama / Coating		
				SN	AG	Nİ
TE 2383 DP1	KART TİPİ "F" KISA TERMİNAL 4.8 =DP= (0.50 malzeme)	0.5±0.03	(CuZn30) Pirinç / Brass	-	-	-
TE 2383 DPK1	KART TİPİ "F" KISA TERMİNAL 4.8 =DPK= (0.50 malzeme)	0.5±0.03	(CuZn30) Pirinç / Brass	+	-	-
TE 2383 DP	KART TİPİ "F" KISA TERMİNAL 4.8 =DP=	0.8±0.03	(CuZn30) Pirinç / Brass	-	-	-
TE 2383 DPK	KART TİPİ "F" KISA TERMİNAL 4.8 =DPK=	0.8±0.03	(CuZn30) Pirinç / Brass	+	-	-
TE 2383 DPN	KART TİPİ "F" KISA TERMİNAL 4.8 =DPN=	0.8±0.03	(CuZn30) Pirinç / Brass	-	-	+



Perspektif  
Perspective

Resim üzerinden ölçü almayınız  
do not measure on drawing

Tarih / Date	05.10.2016	İmza /Signature	Ölçek /Scale			
Çizen / Desing	T.Topçu					
Onay / Approval	S.Gölcük		5 / 1	No	Değişiklik / Revision	Tarih/Date
	Parça Adı: Part Name	KART TİPİ "F" KISA TERMİNAL 4.8			Parça Kodu: Part Code	TE 2383